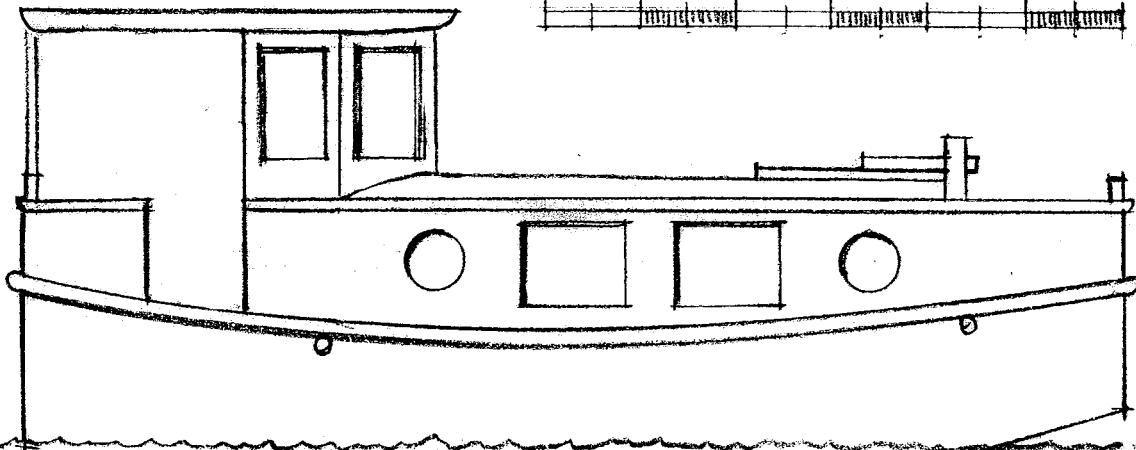
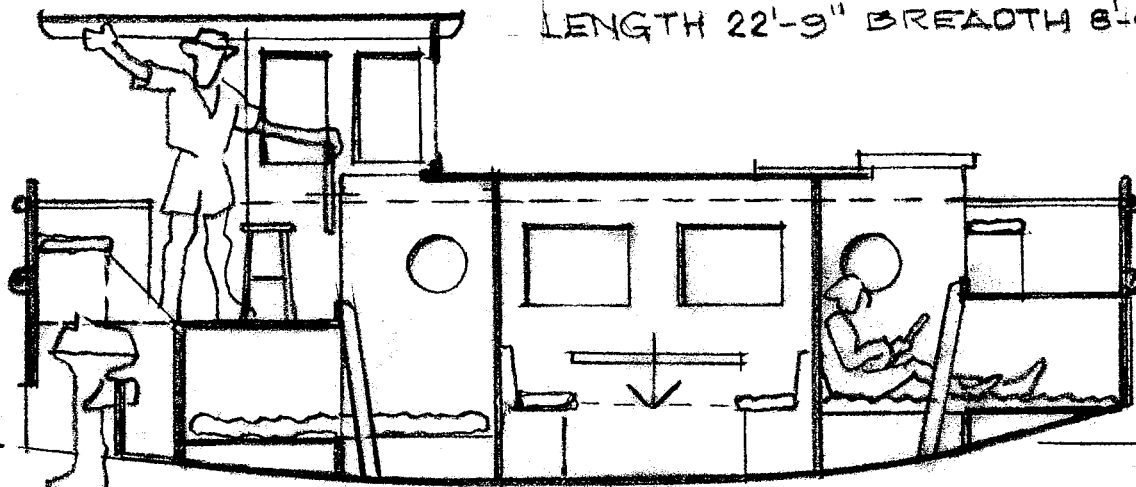


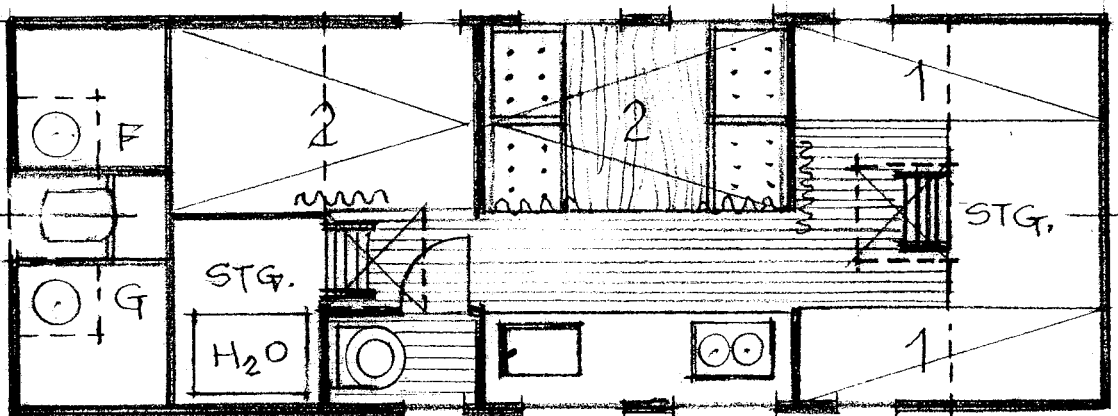
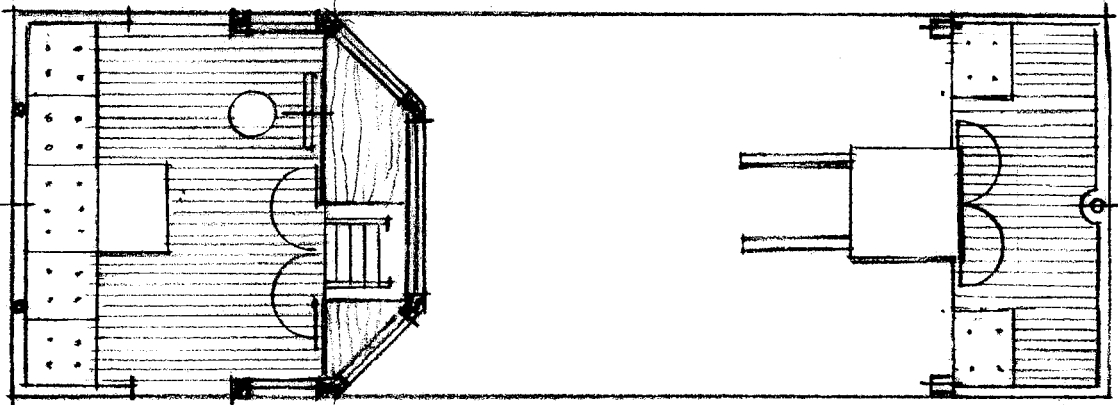
0 2 4 6 8 10 12 FEET



LENGTH 22'-9" BREADTH 8'-0"



5 HP



Thiel  
2008

# FRIENDSHIP

FRIENDSHIP accomodates four boaters in two cabins, plus two more in the convertable dinnette, on dimensions of 22'-9" x 8'-0". Built of marine plywood and stock softwood with a simple box-like barge-type hull there are a minimum of curved panels and beveled cuts to bedevil the advanced amateur builder, while offering authentic work-boat character for canal-cruising or exploring sheltered inland waters.

To further simplify matters the five horsepower outboard motor could be mounted on a retractable bracket aft of the stern transom, and if low bridges and/or high costs were a problem the doghouse could be replaced by a folding bimini top.

A co-op group of partners based on funding and building shares would reduce individual costs and increase overall usage.

PHILIP THIEL

Sea / Land Design

4720 Seventh Ave. NE  
Seattle WA 98105 USA

